

**SOPHOS**

Security made simple.

# MORE VISIBILITY. LESS VULNERABILITY.

Discover the benefits of managing your Public  
Sector's IT security from a single place.



Sophos Central

Extending protection beyond the endpoint.

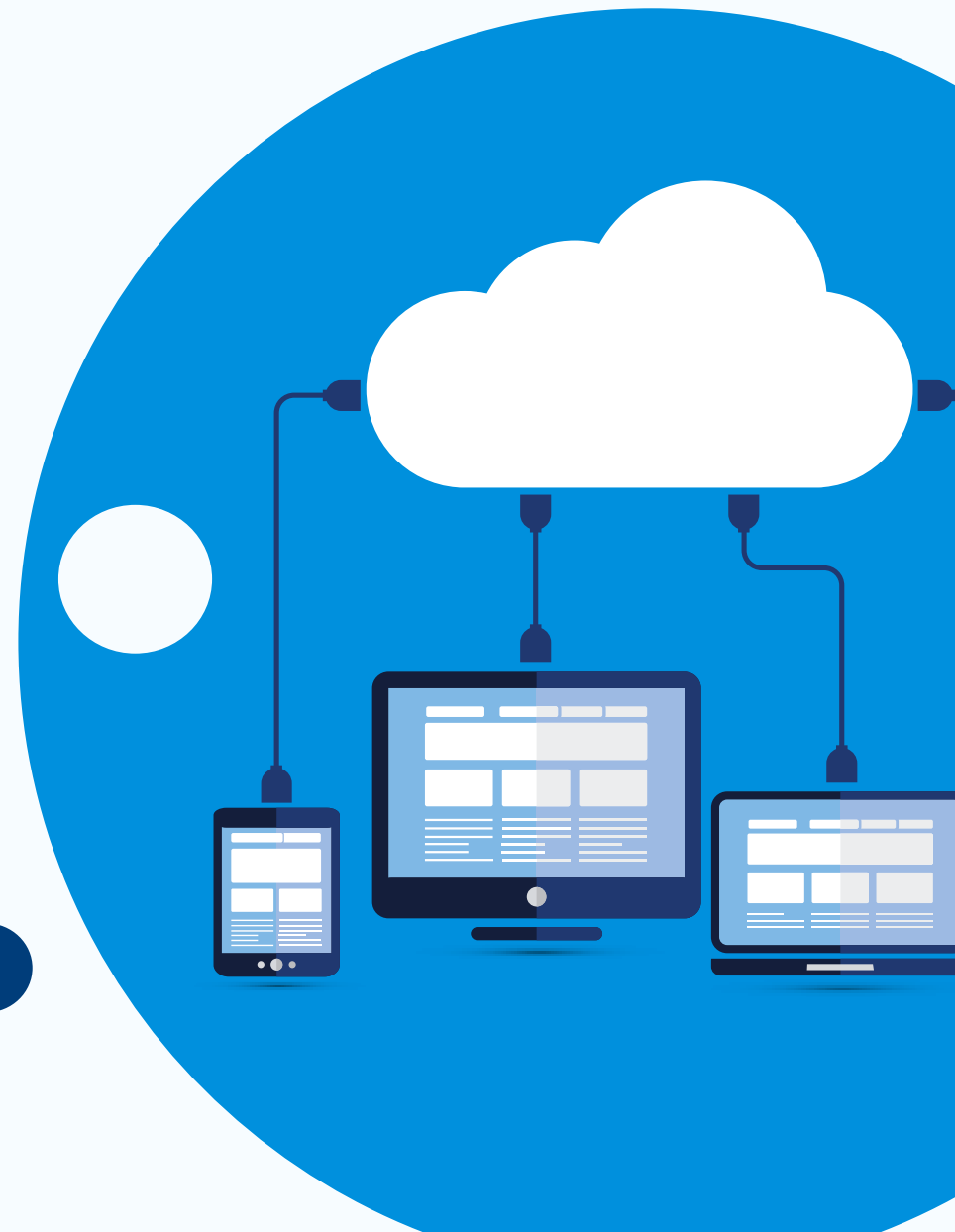
# Switching to Sophos Central.

More UK Public Sector organisations are switching to Sophos Central to manage and maintain their organisation's IT security from a single console.

As a leading supplier to the Public Sector, Sophos Central helps organisations to secure and control their IT infrastructure and data – simply and effectively.

**15% of Sophos Public Sector clients have already made the simple switch** from on-premise to cloud

**Isn't it time you made the simple switch to Sophos Central?**



Switching to  
Sophos Central





# Security made simple.

Increased levels of sophisticated cyber-attacks have been plaguing Public Sector organisations, increasing the need to address and improve IT security. **Modern networks and IT demands continue to get more complex, but your IT security doesn't have to.**

With Sophos Central, you get a single up-to-date, Sophos-hosted platform that's simple and intuitive. Now you can create policies that apply to an individual and not just the device. With all your devices in a single location, you can correlate alerts to allow security decisions to be taken automatically.

So, if you're looking to switch to IT security that gives you more visibility and less vulnerability, discover how Sophos Central can work for you.

Security made  
Simple



# More visibility.

With Sophos Central, we're making it simpler than ever for Public Sector organisations to have unprecedented visibility of all their users' devices, on or off their network. So you can confidently embrace BYOD and support and protect a wide range of user devices.

**Sophos Central offers web-based access to a unified console** with policies that follow users across devices and platforms. That means your organisation's IT admin can check on remote workers on their laptops or mobile devices in one easy view. Plus, it's easy to find and block threats and even clean up infections without the need to travel.



More  
Visibility





## Less vulnerability.

Benefit from less admin as your endpoints, servers, appliances and devices check in directly with Sophos Central to receive, send and share contextual security intelligence. Sensible default policies and point-and-click functionality help you quickly deploy protection, and an intuitive, easy-to-use dashboard provides great visibility of your environment and quick access to routine administrative tasks.

**Simplify your life with a single pane-of-glass to manage your endpoints and more.** Built using an adaptive design, the layout automatically optimises for your screen size. We've optimised all the workflow routines, not only making them intuitive, but also streamlining the experience, keeping you on top of security wherever you are.

Less  
Vulnerability



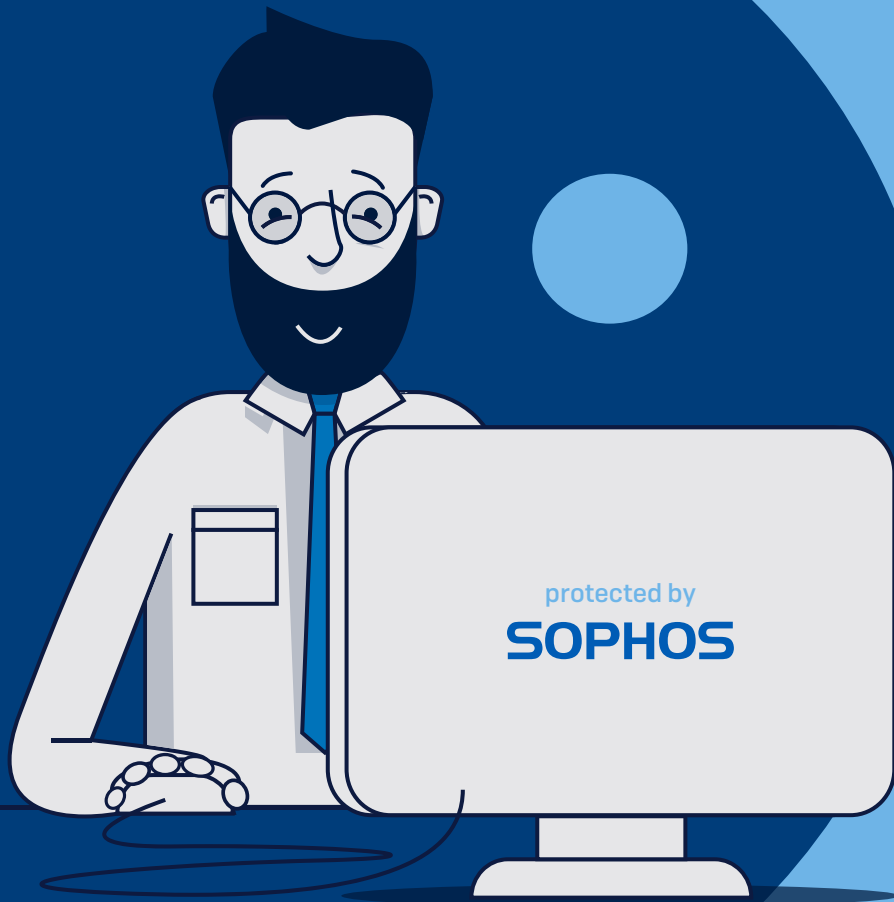
# Migrating to Sophos Central.

If you're using Sophos Enterprise Console to manage Sophos Endpoint Protection, perhaps it's time to consider a switch to Sophos Central. You won't even need to run a server to manage your security anymore.

Featuring a streamlined design, next-generation protection, simplified reporting, and a robust dashboard, **Sophos Central Admin is the most powerful and easy to use solution on the market today.**

Migrating to  
Sophos Central

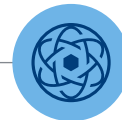




## See Sophos Central in action.

Log in to a fully populated demo  
environment to experience Sophos Central.

See Sophos  
Central in action

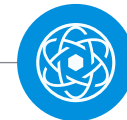


# Sophos Central Knowledge Base.

There are a number of key steps when evaluating and executing the migration from an existing Sophos on-premise solution to Sophos Central.

The Sophos Knowledge Base provides you with all the information you require to make an informed decision to switch to Sophos Central.

Sophos Central  
Knowledge Base





# Are you ready to switch?

Set up your own environment and start a free 30 day trial of Sophos Central today.

This free tool facilitates migration of Sophos Enterprise Console-managed endpoints to Sophos Central. It will also help you evaluate if your endpoints are ready to migrate.

**Don't delay, switch today!**



Are you ready  
to switch?





Sophos Central

**Extending protection beyond the endpoint.**